



Proposing a New Bracing System with Bending Yielding Circular Plates under Cyclic Loading

S. B. Beheshti Aval *, S. ghayoumi

Department of Civil Engineering, K. N. Toosi University of Technology, Tehran, Iran.

ABSTRACT: The most prevalent way to deal with lateral loads in steel structures is using common bracing systems like concentric bracing systems. One of the major drawbacks of this system is the buckling when the compression force exceeds the elastic buckling strength, thereby being unstable before reaching the yield limit. In other words, the behavior of these braces is asymmetric under tension/compression forces leading to reduce the ability of the system to absorption of the most exciting energy and can lead to additional structural and non-structural damages due to the change in the direction of the inertial forces. To tackle these problems and to improve the performance of bracing systems, in this work for the first time, a new bracing system called a fan bracing system has been introduced. Fan brace enhances the ductility and energy absorption of the system by removing harmful buckling effects by replacing axial deformations with flexural ones, which tends to make the system softer and thus increase the natural vibration period of the structure and reduce the earthquake shear force. In this study, the proposed brace is studied using numerical modeling under affecting cyclic excitation based on the loading protocol of ATC-24. The advantages of this system include the symmetrical behavior even in the large cyclic deformations, as well as high energy absorption and lighter weight in comparison with the buckling-restrained brace (BRB).

Review History:

Received: Jul. 15, 2019

Revised: Dec. 11, 2020

Accepted: Feb. 19, 2021

Available Online: Mar. 04, 2021

Keywords:

Fan bracing system

Numerical modeling

Cyclic loading

Energy absorption

Seismic loading.

1. Introduction

It is widely accepted that an earthquake is one of the natural disasters that can still cause devastating loss of life and property. Considering the seismicity of many heavily populated urban areas, the only way to mitigate the impacts of earthquakes is to rehabilitate the existing structures and strictly enforce seismic codes on new structures to ensure adequate protection against this phenomenon.

The use of conventional bracing systems to deal with lateral loads is the most common way from the past to the present. The drawbacks of these systems are the buckling under compressive forces that reduce ductility and energy absorption of the structure as well as damage to structural and non-structural components. In recent decades, engineers have conducted many studies to improve the seismic performance of structures. Notable examples of these studies include buckling-restrained braces (BRB) [1], Added Damping and Stiffness (ADAS), and Triangular Added Damping and Stiffness (TADAS) dampers [2], using Cast Steel Yielding (CSY) fuse at the end of braces [3], and drawer bracing system (DBS) [4].

This paper introduces a new brace design called the fan brace. The mechanism of this brace is similar to the CSY and DBS. The main difference between FBS and two others is locating the yielding disks inside the steel case in a brace instead of a limited length absorber. Other innovations of this

study are presenting construction techniques and the seismic characteristics of this brace such as strength and energy dissipation.

2. Methodology

The schematic view and internal components of a fan brace are shown in Fig. 1.

This brace consists of three sections: steel fans, a central shaft, and a steel casing. The steel shaft passes through the middle of the steel fans, which are connected to the shaft by special mechanical connections or welding. The inner wall of the casing has several grooves with the same width as the fans

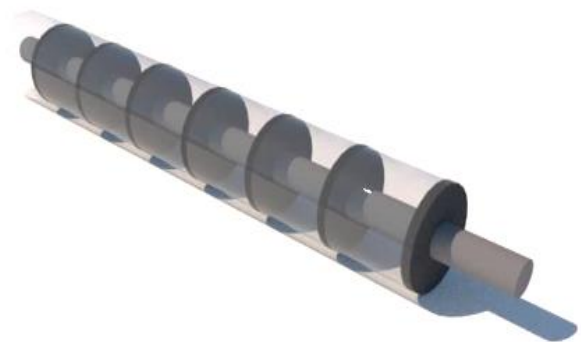


Fig. 1. Schematic view and the internal component of FBS

*Corresponding author's email: beheshti@kntu.ac.ir

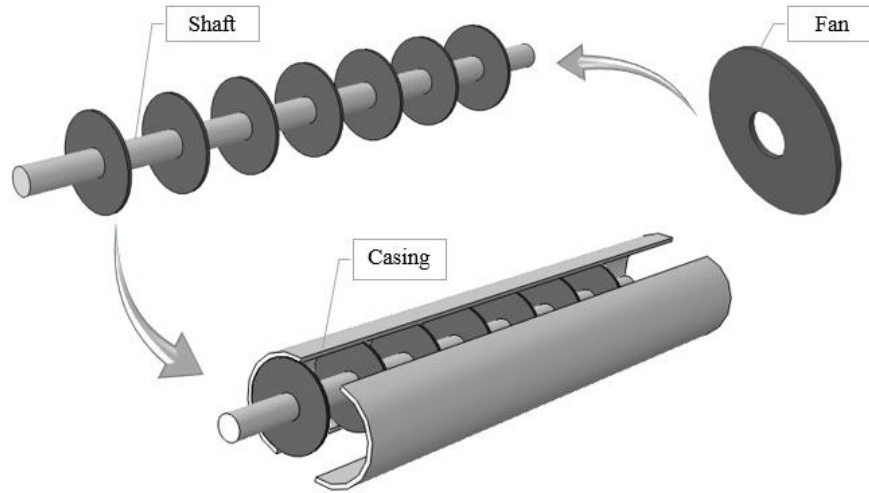


Fig. 2. The arrangement of components of the FBS

(with suitable tolerance), which provide a place for the fans to fit in once the system of shaft and fans is installed inside the casing. Fig. 2 shows the arrangement of components of the fan brace.

In the introduced brace, the axial force applied to its connection with the frame is transferred to the shaft and then to the attached fans. The fans transform this axial force into bending, thereby providing the necessary stiffness, strength, and energy dissipation. Since there is much greater deformation potential in yielding by bending force than by axial force, plastic deformation of the fans allows the system to provide considerable energy dissipation along with extensive ductility (unlike BRBs, which offer less ductility in yielding because of the high stiffness of the cross-section under axial loads).

3. Results and Discussion

The structure considered in this study was a 4-story 3-span residential building with a square plan and a span length of 5

meters and a story height of 3.2 meters, which was assumed to be located in an area with high seismic risk (Fig. 3). The lateral load-bearing system on both sides was considered to be bracing. The structure was designed according to ASCE/SEI 7-16 [5]. To determine the seismic coefficient, the structure was designed using the equivalent static method with the important factor considered to be 1 and the soil type was considered to be B. Considering the lack of any prior study on the behavior factor of the fan brace, this factor was set to be 7 (between the behavior factor of BRB and that of a special concentric brace).

The proposed brace was modeled in the finite element software Abaqus [6].

The cyclic load applied according to the ATC-24 loading protocol [7] is shown in Fig. 4 and the hysteresis curve of the modeled fan brace under this load is illustrated in Fig. 5.

According to the Von Mises stress distribution plotted in Fig. 6, the stress created in all fans is approximately uniform. This reflects the good dimensions and materials of the shaft

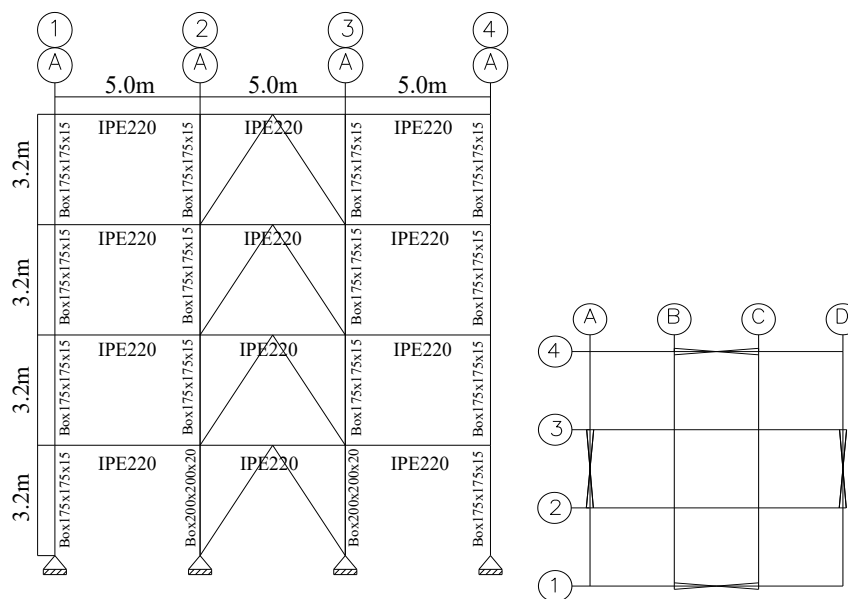


Fig. 3. (a) Plane and (b) elevation of the considered building

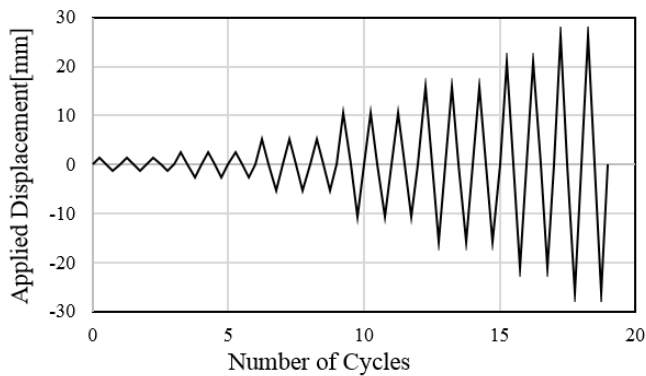


Fig. 4. The applied cyclic load according to the ATC-24 loading protocol

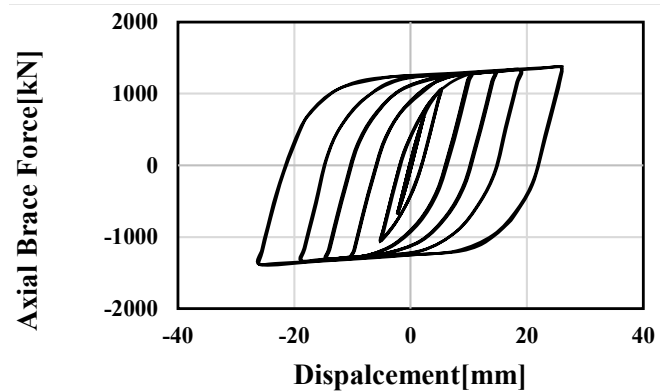


Fig. 5. The hysteresis curve of the modeled FBS

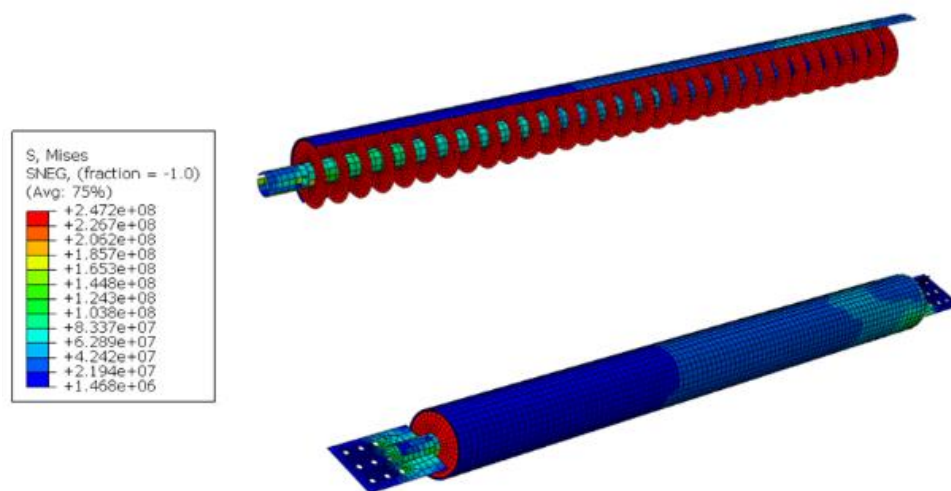


Fig. 6. Von Mises stress distributions of FBS at ultimate displacement (Pa)

and casing, which have allowed all fans to contribute to energy dissipation. Also, the distribution of stress in the core and the casing is such that the maximum stress has emerged at the end of the casing that is connected to the frame and the minimum stress has occurred in the free end of the casing.

4. Conclusions

In this paper, the concept of a new bracing system, called fan bracing, was introduced. The following conclusions can be drawn based on the numerical results presented in this study:

1) According to the cyclic loading curves and obtained results for the fan brace samples, this bracing system has a favorable performance and high energy absorption under lateral loading.

2) In the FBS, stiffness, strength, ductility, and energy absorption can be controlled by a range of parameters including geometry, material, number, thickness, and internal and external radius of fans. But in BRBs, seismic behavior is only controlled by the specifications of the core, and this ties the hands of the designer in modifying stiffness, strength, ductility, and energy absorption by limiting adjustment options to the yield surface and yield strength of the core.

References

- [1] M. Mirtaheri, A. Gheidi, A. P. Zandi, P. Alanjari, H. R. Samani, Experimental optimization studies on steel core lengths in buckling restrained braces, *Journal of constructional steel research*, 67(8) (2011) 1244-1253.
- [2] K.-C. Tsai, H.-W. Chen, C.-P. Hong, Y.-F. Su, Design of steel triangular plate energy absorbers for seismic-resistant construction, *Earthquake spectra*, 9(3) (1993) 505-528.
- [3] M. Gray, C. Christopoulos, J. Packer, Cast steel yielding fuse for concentrically braced frames, in: *Proceedings of the 9th US national and 10th Canadian conference on earthquake engineering*, Earthquake Engineering Research Institute and the Canadian Association for ..., 2010.
- [4] B. Payandehjoo, S. Sabouri-Ghomi, P. Ebadi, Seismic behavior of X-shaped drawer bracing system (DBS) and X-braced frames with heavy central core, *Journal of Earthquake and Tsunami*, 10(04) (2016) 1650004.
- [5] A.S.o.C. Engineers, Minimum design loads and associated criteria for buildings and other structures, in, American Society of Civil Engineers, 2016.

- [6] I.Abaqus,Abaqusdocumentation,Version,6(2014) component of steel structures, Redwood City, CA:
1-5. ATC-24, (1992).
[7] A. Council, Guidelines for cyclic seismic testing of

HOW TO CITE THIS ARTICLE

S. B. Beheshti Aval, S. ghayoumi, Proposing a New Bracing System with Bending Yielding Circular Plates under Cyclic Loading. Amirkabir J. Civil Eng., 53(3) (2021) 239-242.

DOI: [10.22060/ceej.2021.16764.6335](https://doi.org/10.22060/ceej.2021.16764.6335)

