



# Concrete Beam Life Model Based on Shear Strength Degradation Under Different States of Chloride Ion Ingress

S. A. Hosseini<sup>1\*</sup>, M. Bagheri<sup>2</sup>

<sup>1</sup>Faculty of Technology and Mining, Yasouj University, Choram, Iran

<sup>2</sup>Department of Civil Engineering, Birjand University of Technology, Birjand, Iran

**ABSTRACT:** Concrete structures undergo a reduction in strength and ultimately premature deterioration during their life due to environmental factors. Corrosion of reinforcement is known as one of the most important factors in reducing the performance of concrete structures. Assessing the current condition as well as predicting the remaining useful life of structures is very important for providing maintenance plans. In this research, considering the limit-state function of the shear strength of reinforced concrete beams, the life model is calculated under different scenarios of chloride ion penetration. Reduction of the cross-section of longitudinal and transverse rebars, reduction of the cross-section of the concrete beam, and reduction of mechanical properties of concrete and rebar, which are known as side effects of rebar corrosion, have been considered in evaluating the life model. Stochastic properties of effective parameters in shear strength, as well as chloride ions, are also considered for the probabilistic evaluation of the life model. The Monte Carlo sampling method was used to generate the input values of the models. The results show that considering the effect of concrete scaling causes a large difference in the predicted values for the shear strength of concrete beams, so in the critical case, considering the effects of concrete scaling reduces the shear strength by 20% and a more realistic estimate of the remaining life of the structure will be obtained.

## Review History:

Received: Nov. 25, 2020

Revised: Sep. 02, 2021

Accepted: Jan. 27, 2022

Available Online: Feb. 01, 2022

## Keywords:

Life model

Reinforcement corrosion

Shear failure

Concrete beam

Chloride ingress

## 1- Introduction

Reinforcement corrosion in reinforced concrete (RC) structures causes propagation of cracks, reduction of bond strength between rebars and concrete, spalling of concrete cover and eventually degradation of structures due to reduction in strength of RC element. The products of corrosion usually have much volume than that material consumed during the corrosion process [1]. The increase in volume around the reinforcement causes the tensile stresses in the concrete and cracks the cover. With cracking the cover and increasing the crack width, the detrimental effect of the corrosion will be enhanced. Uniform and non-uniform corrosion (pitting) are two major types of steel reinforcement corrosion in RC structures. Chloride ingress usually causes non-uniform corrosion, although with passing time and joining the pitting corrosion along the rebar length, the rebar will be corroded uniformly.

Lots of research has been done about the service life model of the RC structures which were affected by reinforcement corrosion due to chloride ingress. This research mainly focused on strength degradation and evaluation of ultimate limit-states of the RC structures [2]. The type of degradation factors affects how the performance of the structure degraded. For the effects of rebar corrosion, many models

have considered the performance reduction in proportion to the reduction in rebar cross-section [3].

In concrete beams, shear deterioration may occur due to the penetration of chloride ions. In bridge girders, where some construction joints are located on the sides, due to the infiltration of saltwater in winter from these joints, the hazards in the girder support will increase. Previous research has not done much on the conditions and directions of chloride ion penetration, and most researchers have evaluated the effect of corrosion effects on the strength of beams by creating accelerated corrosion. In this study, by considering different scenarios of chloride ion penetration in concrete beams, the corrosion effects of rebars on the residual shear strength have been evaluated. The effect of uncertainty of effective parameters on shear strength also has been considered.

## 2- Methodology

To investigate the effects of rebar corrosion on the shear strength of concrete beams, the steps of different effects of chloride ion penetration in the applied scenarios are considered. The diffusion of chloride ions into the cross-section is considered one-dimensional based on Equation (1):

\*Corresponding author's email: a.hosseini@yu.ac.ir



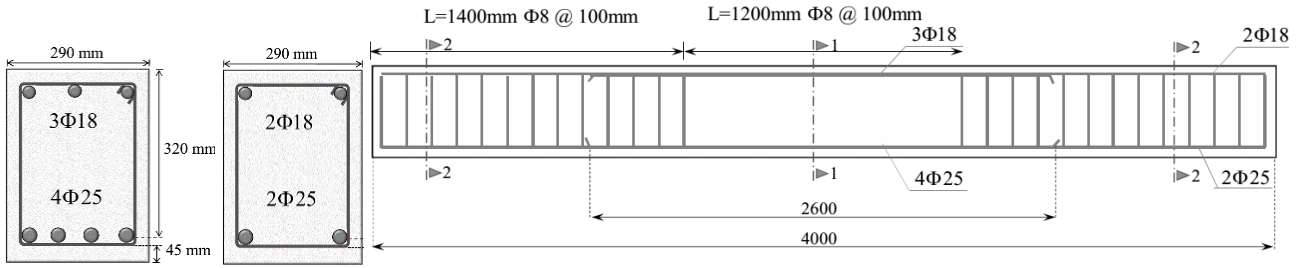


Fig. 1. Simply supported RC beam

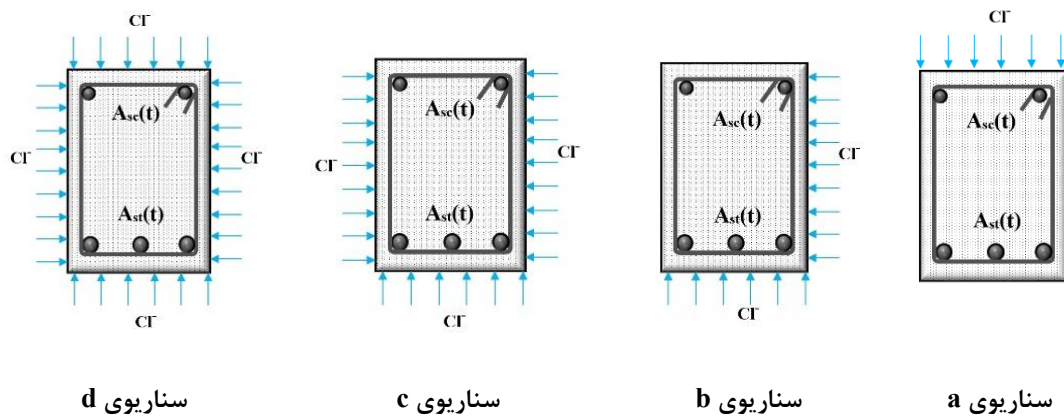


Fig. 2. Different scenarios for how chloride ions penetrate

$$C(x, t) = C_0 + \left( C_s - C_0 \left[ 1 - \operatorname{erf} \left( \frac{x}{2\sqrt{D_{app,c}t}} \right) \right] \right) \quad (1)$$

where  $C(x, t)$  is the chloride ion concentration at a depth of  $x$  and time  $t$ ;  $C_0$  is the chloride ion concentration in the concrete;  $C_s$  is the chloride ion concentration at the surface of concrete;  $D_{app,c}$  is the diffusion coefficient of chloride ions in concrete;  $\operatorname{erf}$  is the error function. To evaluate the effects of different chloride ion diffusion scenarios, the beam shown in Figure 1 is considered. How chloride ions penetrate into the concrete beam is assumed in the four scenarios shown in Figure 2. The nominal shear strength of the beam,  $V_n$  at time  $t$  from the onset of corrosion is calculated as follows:

$$v_n(t) = v_s(t) + v_c(t) \quad (2)$$

where  $V_s$  and  $V_c$  are the steel and concrete shear strength respectively.

### 3- Results and Discussion

Figure 3 shows the results for all scenarios for comparison. In this figure, the effect of considering the reduction of the cross-section in different ways is quite obvious. Considering the most critical situation, which is the scenario (d), the shear strength for concrete beams in which rebar corrosion begins in the 7th year reaches 0.65 of the initial shear strength after 60 years. If the life model is considered based on merely reducing the cross-sectional area of the rebar, the shear strength reaches 0.86 of the initial value, which is very different from the actual value:

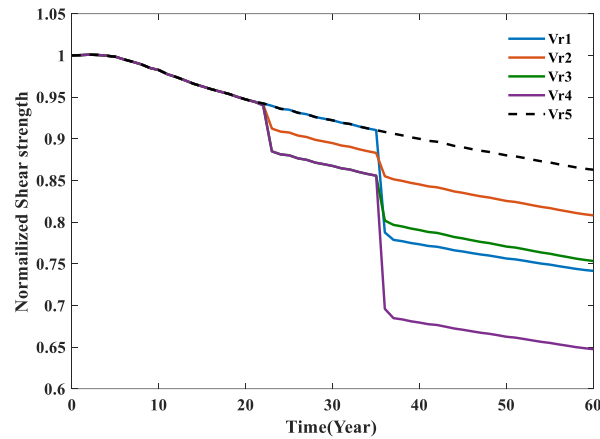


Fig. 3. Shear strength at time t to initial strength for different chloride ion diffusion scenarios

#### 4- Conclusions

Considering the effect of concrete scaling causes a large difference in the predicted values for the shear strength of concrete beams, in the critical state, considering the effects of concrete scaling, the shear strength decreases by 20% and a more realistic assessment of the remaining life of the structure is obtained.

#### References

[1] Bhargava, K., Y. Mori, and A. Ghosh, Time-dependent reliability of corrosion-affected RC beams—Part 1: Estimation of time-dependent strengths and associated

variability. Nuclear Engineering and Design, 2011. 241(5): p. 1371-1384.

[2] Alexander, M. and H. Beushausen, Durability, service life prediction, and modelling for reinforced concrete structures—review and critique. Cement and Concrete Research, 2019. 122: p. 17-29.

[3] Song, H.-W., et al., A micro-mechanics based corrosion model for predicting the service life of reinforced concrete structures. International Journal of Electrochemical Science, 2007. 2: p. 341-354.

#### HOW TO CITE THIS ARTICLE

S. A. Hosseini, M. Bagheri, Concrete Beam Life Model Based on Shear Strength Degradation Under Different States of Chloride Ion Ingress, Amirkabir J. Civil Eng., 54(8) (2022) 609-612.

DOI: 10.22060/ceej.2022.19296.7133



