



## Construction of recycled glass powder-based geopolymer and its application in resistance parameters to stabilize the clay

M. A. Mohammadzadeh\*, M. M. Toufigh

Department of Civil Engineering, Shahid Bahonar University of Kerman, Kerman, Iran

**ABSTRACT:** Glass powder is one of the increasing solid wastes in the world, and on the other hand, clay usually needs improvement to use in construction projects. In the present study, modification of clay soil strength parameters was studied by geopolymer based on recycled glass powder (RGP). For this purpose, uniaxial strength (UCS) and California load Bearing Ratio (CBR) tests were performed on the modified specimens. Processing time, the weight percentage of used-RGP and activator concentration (M) were the studied variables in the current study. For comparison, experiments were performed on samples modified with 10% Portland cement. The addition of the geopolymer to soil samples showed that 9% of RGP was the optimal amount. Also, despite of the 0day samples in the CBR experiment, other UCS and CBR samples had the optimal amount of activator concentration (NaOH), which indicates the effect of processing conditions on the behavior of the modified soil. The assessed scanning electron imaging (SEM) images showed the effect of the corrective method on soil mass. Analytical comparison of UCS and CBR experiments indicated a mathematical relationship between the results of UCS and CBR-7day experiments associated by a good relative correlation that was predictable due to the same storage conditions of the samples in the first 7 days. Due to the different processing conditions of both tests in the first 7 days, a slight correlation was observed in the results of UCS and CBR-0day tests

### Review History:

Received: May, 02, 2021  
Revised: Aug. 04, 2021  
Accepted: Aug. 26, 2021  
Available Online: Sep. 16, 2021

### Keywords:

Geopolymer  
Recycled Glass Powder  
Clay Stabilization  
California Bearing Ratio

### 1- Introduction

Most problematic soils as the bedrock of development projects need to be improved. Portland cement and lime are traditional common options for stabilizing such soils in geotechnical engineering; however, the use of mentioned materials has polluted the environment. For each ton of produced cement, is achieved one ton of carbon dioxide approximately; therefore, it has been considered one of the most polluting industries [1]. Waste glass is also a challenge for waste management systems worldwide [2]. One of the best alternatives to Portland cement is geopolymers. Arulrajah et al. reported the positive effect of coal ash on UCS and CBR of soils with high organic matter [3]. An increased CBR was observed by Binal., through adding coal ash to fine-grained soil with high plasticity [4]. In another study, rice husk ash and cement kiln dust mixed by the clay improved the uniaxial strength and CBR quantity [5]. The uniaxial strength of glass powder-modified specimens was also measured and reported optimal values for both variables, glass powder percentage and the activator concentration [6]. Dungca et al. illustrated that sludge soil modification by fly-ash was improved and both UCS and CBR parameters were increased using this geopolymer subsequently [7]. Sagathiya et al. Investigated the

inflatable soils modified with cement kiln dust and observed the optimal amount of cement kiln dust consumption for CBR parameters [8]. Accordingly, the present study aimed to investigate the effect of using RGP-based geopolymer on clay improvement. The experiments in this study included UCS, CBR, and some microstructural experiments.

### 2- Materials

#### 2- 1- Soil

The used soil in this study was classified into the clay with low pasty (CL) based on the soil classification system [9]. The results of the standard compaction test showed that the optimal soil moisture and the maximum specific gravity were 14% and 1.368 gr/cm, respectively.

#### 2- 2- Glass powder

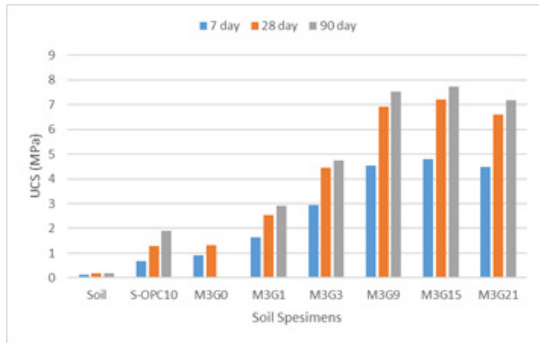
Recycled glass powder (RGP) was collected from the city and then powdered and sieved in the laboratory.

#### 2- 3- Activator substance

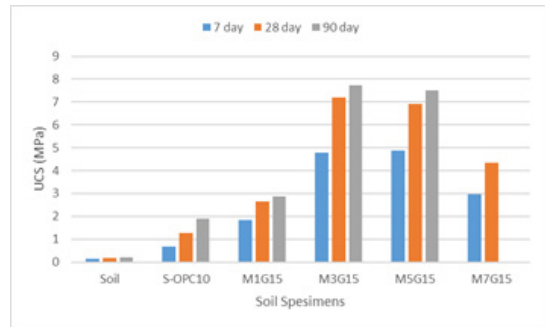
In this study, sodium hydroxide (NaOH) with 98% purity was used to make the activator. Since sodium hydroxide dissolving in water raises the temperature, the alkaline solution was prepared the day before.

\*Corresponding author's email: Geocivil.mdz@gmail.com

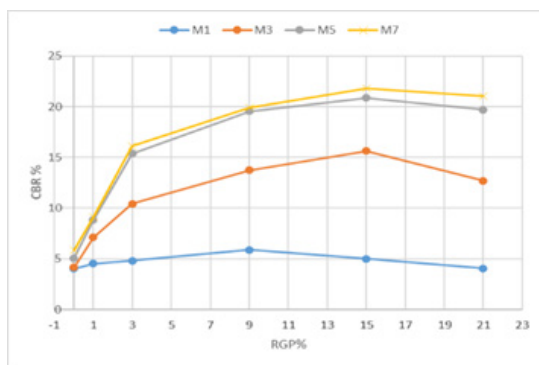




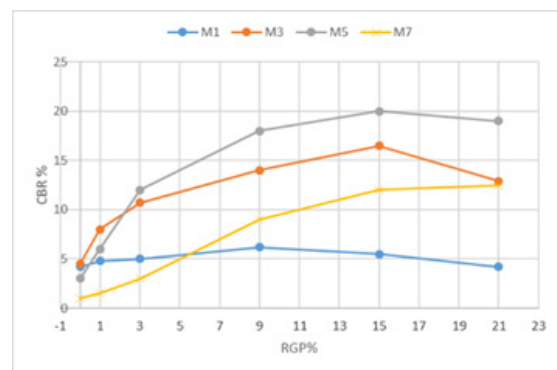
**Fig. 1. Uniaxial strength of unstabilized soil, soil stabilized with 10% cement and soil stabilized with geopolymer (3 M caustic soda)**



**Fig. 2. Uniaxial strength of unstabilized soil, soil stabilized with 10% cement and soil stabilized with geopolymer (15% RGP)m**



**Fig. 3. Changes in CBR values versus changes in RGP percentage for 0 day samples**



**Fig. 4. Changes in CBR values versus changes in RGP percentage for 7 day samples**

### 3- Methodology

All samples were made with the results of the density test. To make the samples, specific amounts of dry soil and glass powder were mixed with different weight ratios of RGP to dry soil (1, 3, 9, 15 and 21 wt. %) for at least 2 min. The activator solution with different concentrations (1, 3, 5 and 7 M) was added to the soil and RGP mixture; then was kneaded for at least 10 min. The obtained mixture was concentrated in 3 layers inside the mold. Unmodified soil as a control sample (Soil) and 10% Portland cement modified samples (S-OPC10) were prepared by the same method. The compacted UCS specimens were placed at room temperature for 7, 28, and 90 days, and afterwards tested for uniaxial compressive strength. For the CBR test, a series of samples were placed in a pond for 96 hours immediately after construction and identified as 0 day; the second series was first placed at room temperature for 7 days, then in a basin for 96 hours which was identified as the 7day.

### 4- Results

Comparison of the results of the uniaxial experiment showed that, soil modification by geopolymer increased the resistance generally. According to Figure 1, the trend of

increased resistance has an optimal value (RGP = 15%) by increasing the percentage of recycled glass powder in constant molarity of the active ingredient. For example, M3G15 samples showed 34, 38 and 40 times higher resistance at 7, 28 and 90 days, respectively; as well as, they were 7, 5 and 4 times higher resistant compared to the S-OPC10 samples.

As shown in Figure 2, the optimal molarity of the activating agent is 3% (M = M3). This trend was expected according to previous studies [6].

A CBR number equal to 3, was obtained in the laboratory for the studied soil. A 6.9-fold increase in CBR was observed for 0day samples compared to soil samples, which was greater than a 6.3-fold increase in 7day samples. The increased California load ratio of S-OPC10 models was 4.4 times compared to the Soil models. These values indicate that geopolymer is more effective in modifying soil CBR than Portland cement. Owing to that the CBR value equal to 5, is an important limit for using substrate materials in road pavement design [8]. According to Figures 3 and 4, the optimal value for the recycled glass powder was observed 15% in both series of 0 day and 7 day samples.

Increasing the activator concentration for 0 day samples resulted in the increasing trend of CBR values with decreasing slope. However, the optimal value range for 7 day samples

was 3 ( $M = 3$ ) to 5 ( $M = 5$ ). While for UCS samples, the optimal value of the activator concentration is 3 ( $M = 3$ ).

## 5- Conclusions

Addition of RGP to the soil, increased uniaxial compressive strength. The weight percentage of glass powder showed an optimal amount (15%).

Added RGP to the soil increased CBR in both 0day and 7day processing conditions. The highest increase in CBR occurred in the weight percentage of 15% of RGP.

The effect of activator concentration on increasing CBR showed two completely different trends for 0day and 7day samples.

## References

- [1] D. Khale, R. Chaudhary, Mechanism of geopolymerization and factors influencing its development: A review, *Journal of Materials Science*, 42(3) (2007) 729--746.
- [2] Y. Jani, W. Hogland, Waste glass in the production of cement and concrete - A review, *Journal of Environmental Chemical Engineering*, 2(3) (2014) 1767--1775.
- [3] A. Arulrajah, T.-A. Kua, C. Phetchuay, S. Horpibulsuk, F. Mahghoolpilehrood, M.M. Disfani, Spent Coffee Grounds–Fly Ash Geopolymer Used as an Embankment Structural Fill Material, *Journal of Materials in Civil Engineering*, 28(5) (2016) 04015197.
- [4] A. Binal, The Effects of High Alkaline Fly Ash on Strength Behaviour of a Cohesive Soil, *Advances in Materials Science and Engineering*, 2016 (2016).
- [5] E. Adeyanju, C.A. Okeke, I. Akinwumi, A. Busari, Subgrade Stabilization using Rice Husk Ash-based Geopolymer (GRHA) and Cement Kiln Dust (CKD), *Case Studies in Construction Materials*, 13 (2020).
- [6] M. P. Bilondi, M. M. Toufigh, V. Toufigh, Experimental investigation of using a recycled glass powder-based geopolymer to improve the mechanical behavior of clay soils, *Construction and Building Materials*, 170 (2018) 302--313.
- [7] J.R. Dungca, K.D. Ang, A.M.L. Isaac, J.J.R. Joven, M.B.T. Sollano, Use of dry mixing method in fly ash based geopolymer as a stabilizer for dredged soil, *International Journal of GEOMATE*, 16(57) (2019) 9--14.
- [8] A. Sagathiya, B. Patel, Y. Zala, Experimental Study on Cement Kiln Dust Based Geopolymer as Subgrade Soil Stabilizer, (7) (2020) 3--8.
- [9] S.N. Warren, R.R. Kallu, C.K. Barnard, Correlation of the rock mass rating (RMR) system with the unified soil classification system (USCS): introduction of the weak rock mass rating system (W-RMR), *Rock mechanics and rock engineering*, 49(11) (2016) 4507-4518.

### HOW TO CITE THIS ARTICLE

M. A. Mohammadzadeh, M. M. Toufigh, *Construction of recycled glass powder-based geopolymer and its application in resistance parameters to stabilize the clay*, *Amirkabir J. Civil Eng.*, 54(5) (2022) 375-378.

DOI: [10.22060/ceej.2021.19653.7306](https://doi.org/10.22060/ceej.2021.19653.7306)



